

±27.92 RAIL SERVED ACRES AVAILABLE

NEC BURRIS ROAD & CLAYTON ROAD | PINAL COUNTY, ARIZONA

LOCATION The Property is located on the northeast corner of Burris Road & Clayton Road in Pinal County, AZ.

SIZE ±27.92 Acres

PRICE Submit All Offers

PARCELS 503-34-002A, 503-34-002B, 503-34-003, 503-34-004A

TAXES \$3,475.00 (2024)

ZONING I-2, Pinal County

UTILITIES Water - Arizona Water Company
Sewer - City of Casa Grande
Power - Arizona Public Service
Gas - Southwest Gas Corporation

IRRIGATION Property is located in the San Carlos Irrigation District. [Click here to view the Water Rights.](#)

ADDITIONAL INFORMATION [Click here to view the ALTA Commit to Title Insurance](#)



CONTACT FOR MORE INFORMATION

Kirk P. McCarville, CCIM
kmccarville@landadvisors.com
520.251.0348

Trey Davis
tdavis@landadvisors.com
602.363.3901



520.251.0348 | LANDADVISORS.COM

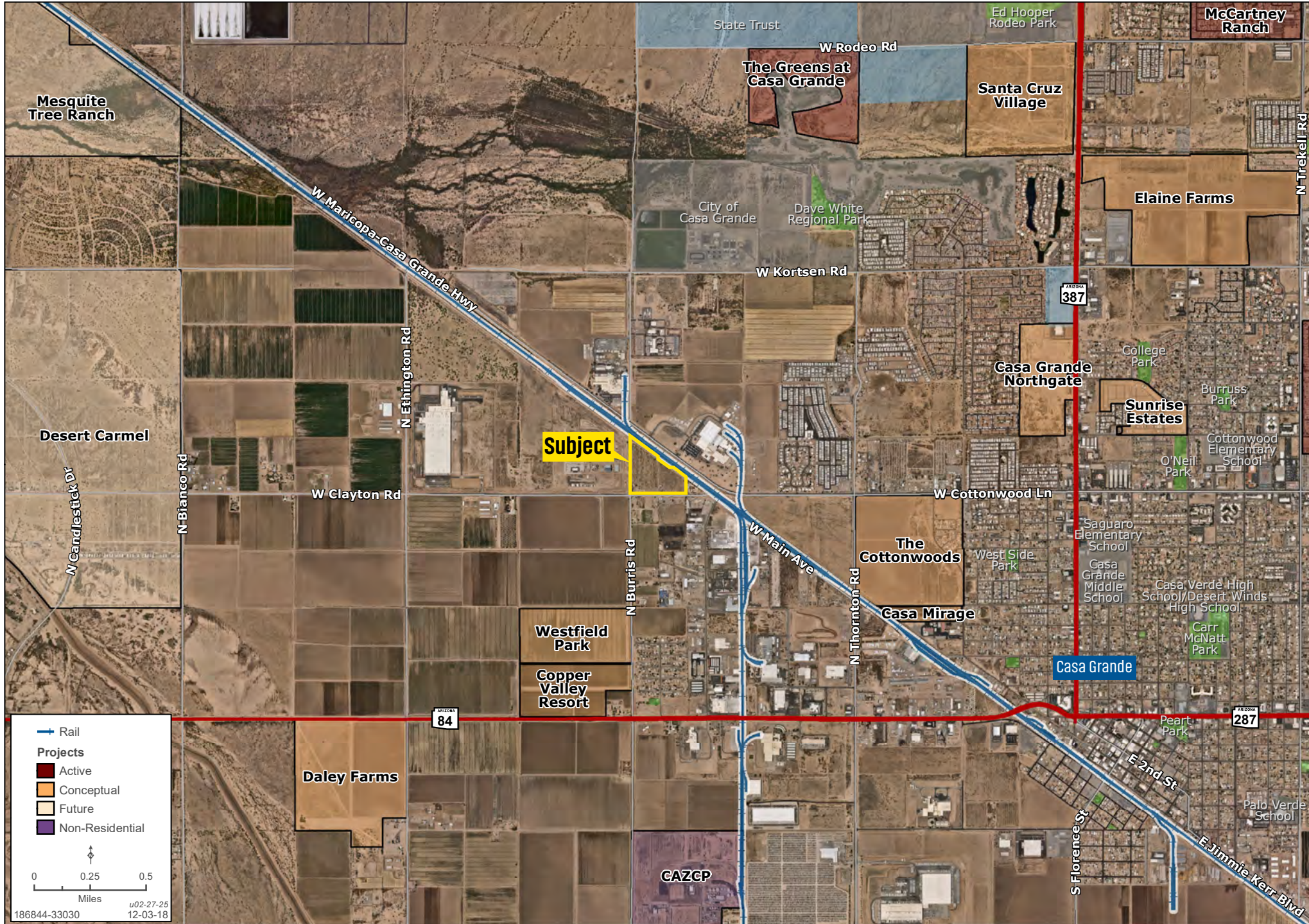
DETAIL

Kirk P. McCarville, CCIM | Trey Davis | 520.251.0348 | landadvisors.com



AREA

Kirk P. McCarville, CCIM | Trey Davis | 520.251.0348 | landadvisors.com



CORPORATE NEIGHBORS

Kirk P. McCarville, CCIM | Trey Davis | 520.251.0348 | landadvisors.com



Rail
Projects
 Active
 Pending
 Conceptual
 Future
 Non-Residential

0 0.25 0.5 Miles
 u02-27-25
 12-03-18
 186844-33030

REGIONAL

Kirk P. McCarville, CCIM | Trey Davis | 520.251.0348 | landadvisors.com



PINAL COUNTY HIGHLIGHTS | [CLICK THE LINKS BELOW FOR MORE INFORMATION](#)



[New Jobs](#)

[Coming to
Pinal County](#)



[Labor](#)

[Report](#)



[Casa Grande](#)

[Incentive
Package](#)



[Pinal County](#)

[Incentive
Package](#)



[4Q24](#)

[Market
Insights](#)



[About](#)

[Land Advisors
Organization](#)

The information in this document and any attachments regarding any property has been obtained from sources believed reliable, but we have not verified it and we make no guarantee, warranty, or representation as to its accuracy or completeness, and we do not undertake to update or correct any of the information presented. Any projections, opinions, assumptions, or estimates ("forward-looking statements") used are, for example, only and do not represent the current or future performance of the property and actual results may differ materially from such forward-looking statement due to, without limitation, changes in: (i) the market, (ii) governmental legal, regulatory or permitted use changes, and (iii) other factors. You and your advisors should conduct a careful, independent investigation of the property to determine to your satisfaction the property's suitability for your needs. Any reliance on this information is at your own risk and is subject to change, prior sale or complete withdrawal. AZPinal186844 - 08.08.2025.



[LandAdvisors.com](https://www.LandAdvisors.com)