

# 1100 E ROSSER

PRESCOTT, AZ



CONTACT FOR MORE INFORMATION

Capri Barney  
cbarney@landadvisors.com  
928.445.4457

 Land Advisors<sup>®</sup>  
ORGANIZATION

928.445.4457 | LandAdvisors.com



# EXECUTIVE SUMMARY



ADDRESS	1100 E Rosser, Prescott AZ
LOCATION	NWC of Rosser Street & Blooming Hills Drive, Prescott, AZ
SIZE	±4.61 Acres
PRICE	\$1,300,000
PARCELS	105-03-004G
ZONING	SF-35
UTILITIES	Water City of Prescott Sewer City of Prescott Natural Gas Unisource Energy Services Cable/Internet/Fiber Optic Sparklight, Century Link Telephone Century Link (Location of and ability to connect to utilities will need to be determined)
PROPERTY TAXES	\$735 (2024)

PROPERTY DESCRIPTION	The Property is centrally located in Prescott, Arizona. It is only minutes from the Historic Courthouse Square, shops, restaurants, entertainment, and the outdoor recreational opportunities of the 1.25 million-acre Prescott National Forest. The property zoning will currently allow for five residential lots. The ability to split further will require a development plan and approval by the City of Prescott. The surrounding properties are zoned SF-35 to the west, SF-18 to the north and NOB (Neighborhood Oriented Business) to the east and south. The owner is willing to support a rezone of the property.
----------------------	--





DETAIL | 1100 E ROSSER, PRESCOTT, AZ

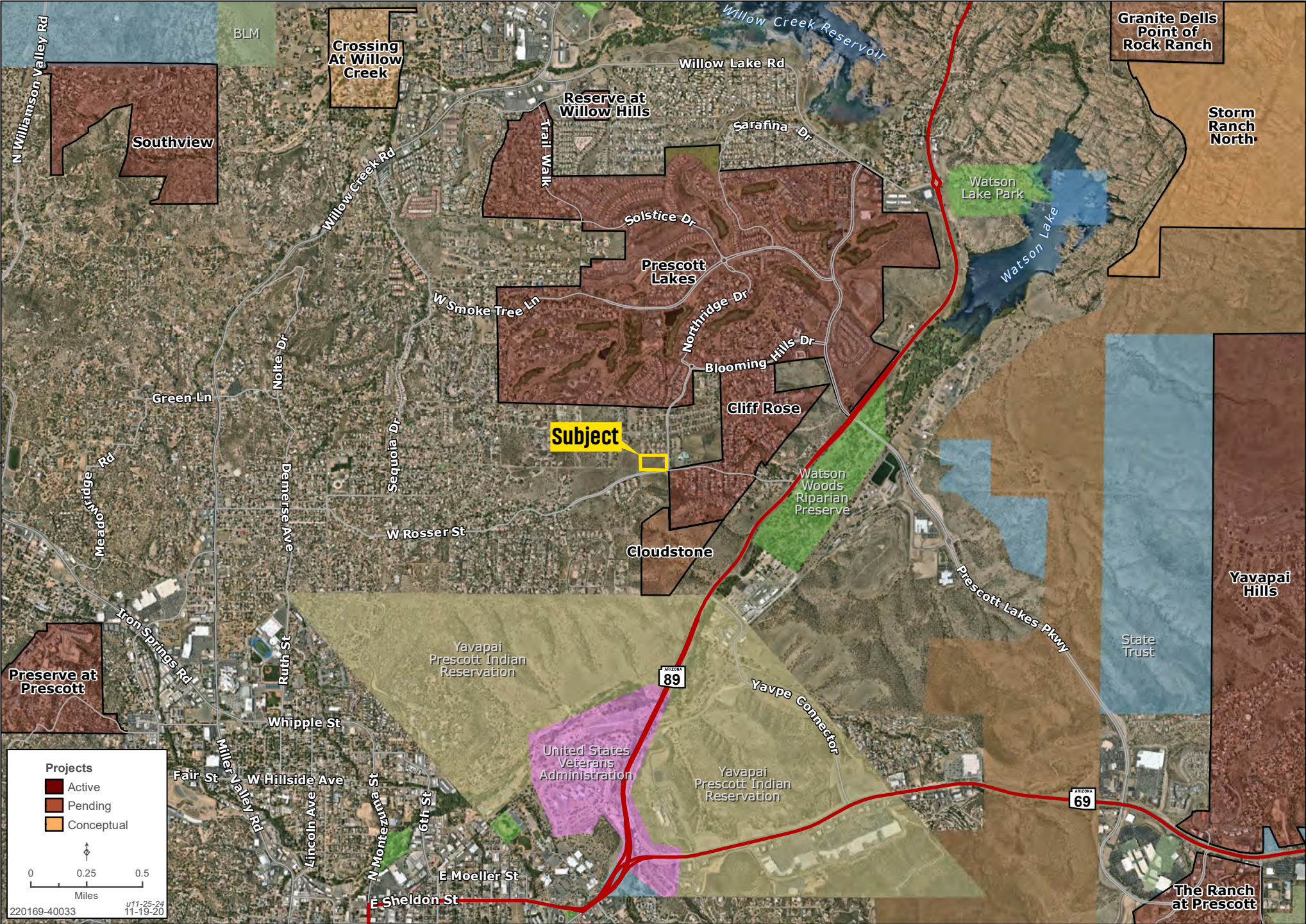
Capri Barney | 928.445.4457 | landadvisors.com





AREA | 1100 E ROSSER, PRESCOTT, AZ

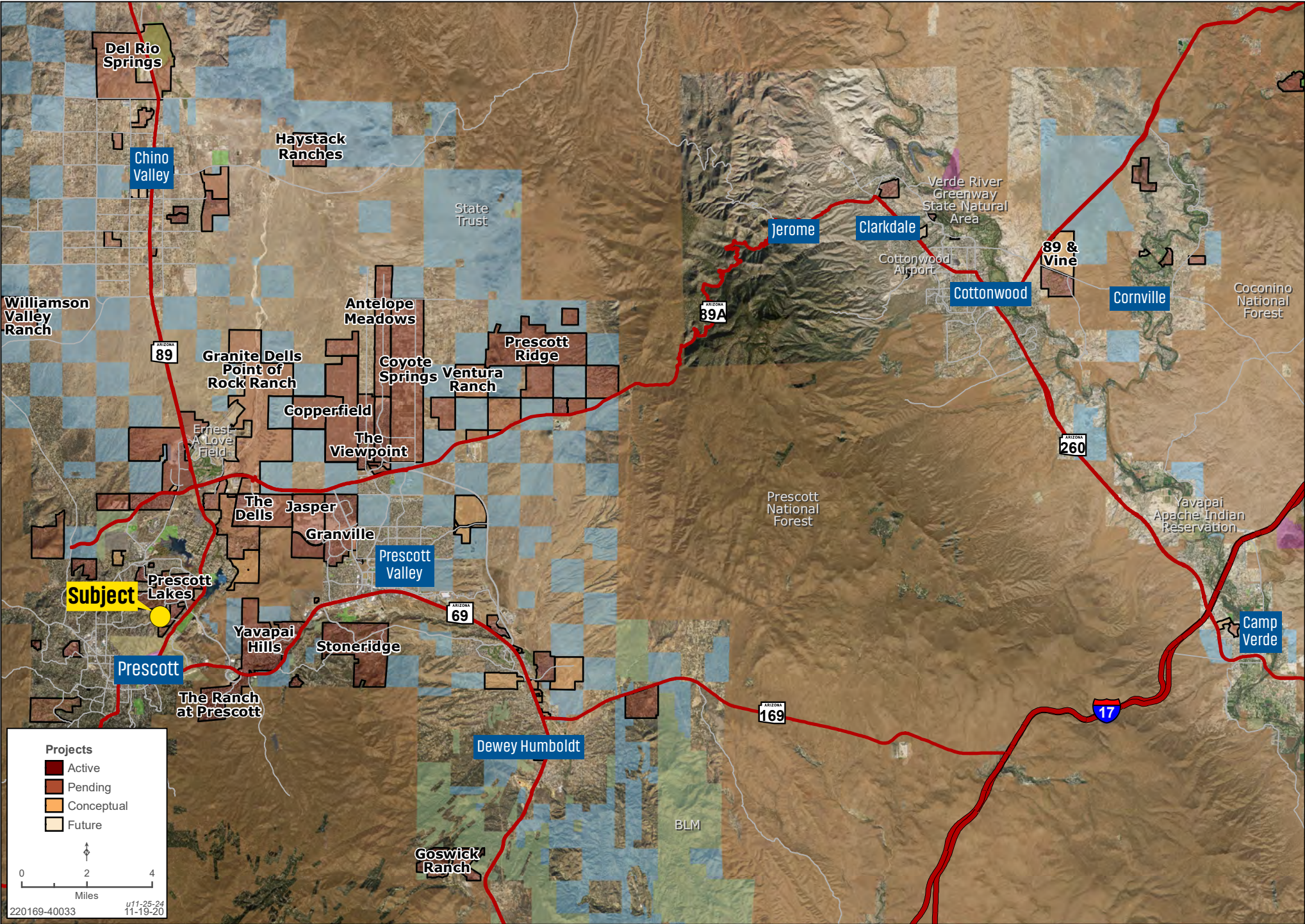
Capri Barney | 928.445.4457 | landadvisors.com





# REGIONAL | 1100 E ROSSER, PRESCOTT, AZ

Capri Barney | 928.445.4457 | landadvisors.com





# AERIAL PHOTO | NW VIEW





# AERIAL PHOTO | SW VIEW





# AERIAL PHOTO | SOUTHERN VIEW





# AERIAL PHOTO | NE VIEW





The information in this document and any attachments regarding any property has been obtained from sources believed reliable, but we have not verified it and we make no guarantee, warranty, or representation as to its accuracy or completeness, and we do not undertake to update or correct any of the information presented. Any projections, opinions, assumptions, or estimates ("forward-looking statements") used are, for example, only and do not represent the current or future performance of the property and actual results may differ materially from such forward-looking statement due to, without limitation, changes in: (i) the market, (ii) governmental legal, regulatory or permitted use changes, and (iii) other factors. You and your advisors should conduct a careful, independent investigation of the property to determine to your satisfaction the property's suitability for your needs. Any reliance on this information is at your own risk and is subject to change, prior sale or complete withdrawal. AZYavapai220169 - 02.05.2025.



[LandAdvisors.com](https://LandAdvisors.com)