

BASILA PECAN FARM

±846 ACRES | ELFRIDA, COCHISE COUNTY, ARIZONA



Bobby Wuertz

bwuertz@landadvisors.com

480.874.4312

CA DRE #01994063



480.483.8100 | LandAdvisors.com

OVERVIEW



Basila Farms is located on the slope of the Sulphur Springs Valley within the Douglas AMA at an elevation of 4,200'.

Typical crops grown in Cochise County are Pecans, Pistachios, Corn, Cotton, Alfalfa, Dry Beans, Wine Grapes. Elfrida benefits from a warm and arid desert climate with long, hot summers and mild winters, providing ideal conditions for healthy tree nut growth in the summers while also enabling enough chilling hours for recovery in the winter. Given the climate, ample amounts of sunlight, well-drained soils, access to water, and proximity to both domestic and international markets, southeastern Arizona is a prime location for growing pecans.



PROPERTY DETAILS



LOCATION ±394 acres located near the intersection of W Courtland Road and Moore Road.

±452 acres located just north of the intersection of W Gleeson Road and N Hohokam Farm Way

SIZE Courtland Farm: ±394 gross acres | ±286 acres of Pecans | ±80 acres of open farm ground

Gleeson Farm: ±452 gross acres | ±399 acres of Pecans

PRICE \$18,000,000

2024 TAXES Courtland Farm: \$19,850.30
Gleeson Farm: \$6,412.88
Total Taxes: \$26,263.18

ZONING Agriculture

AMA [Click here to view the first draft of the Douglas AMA](#)

IRRIGATION

Courtland Farm:

- 100% of ranch irrigated
- 5 wells with spin clean filters | 2,500 gpm
- 1 well with casing drilled to 1,000 ft. (2018) not in use

Gleeson Farm:

- 100% of ranch irrigated
- 4 brand new wells with sand media filters | 3,000 gpm
- 1 well with brand new filter station not in use

PLANTINGS

Courtland Farm:

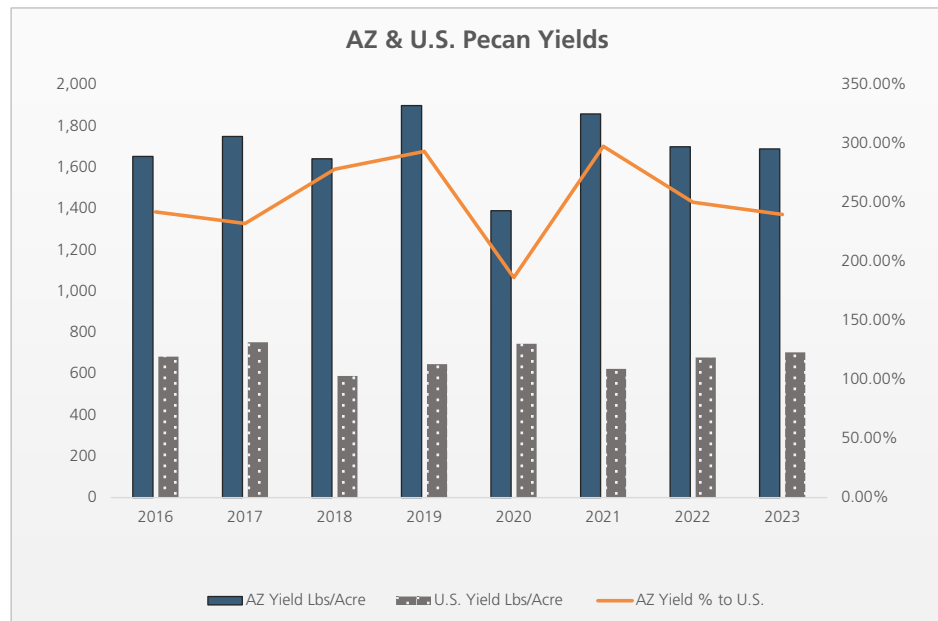
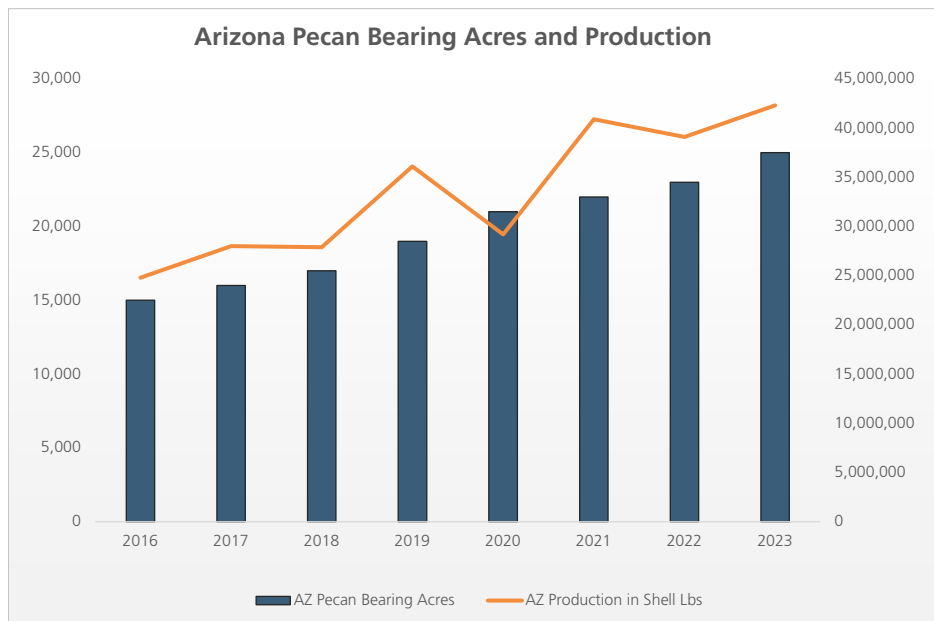
- ±286 acres of pecans
- 100% in production
- 100% Western
- ±80 acres of unplanted farmland with water rights

Gleeson Farm:

- ±117 acres | 2015 Plantings | 20% Western, 40% Waco, 40% Wichita
- ±150 acres | 2018 Plantings | 80% Western, 20% Wichita
- ±132 acres | 2019 Plantings | 80% Western, 20% Wichita



ARIZONA VS. U.S. PECAN DATA

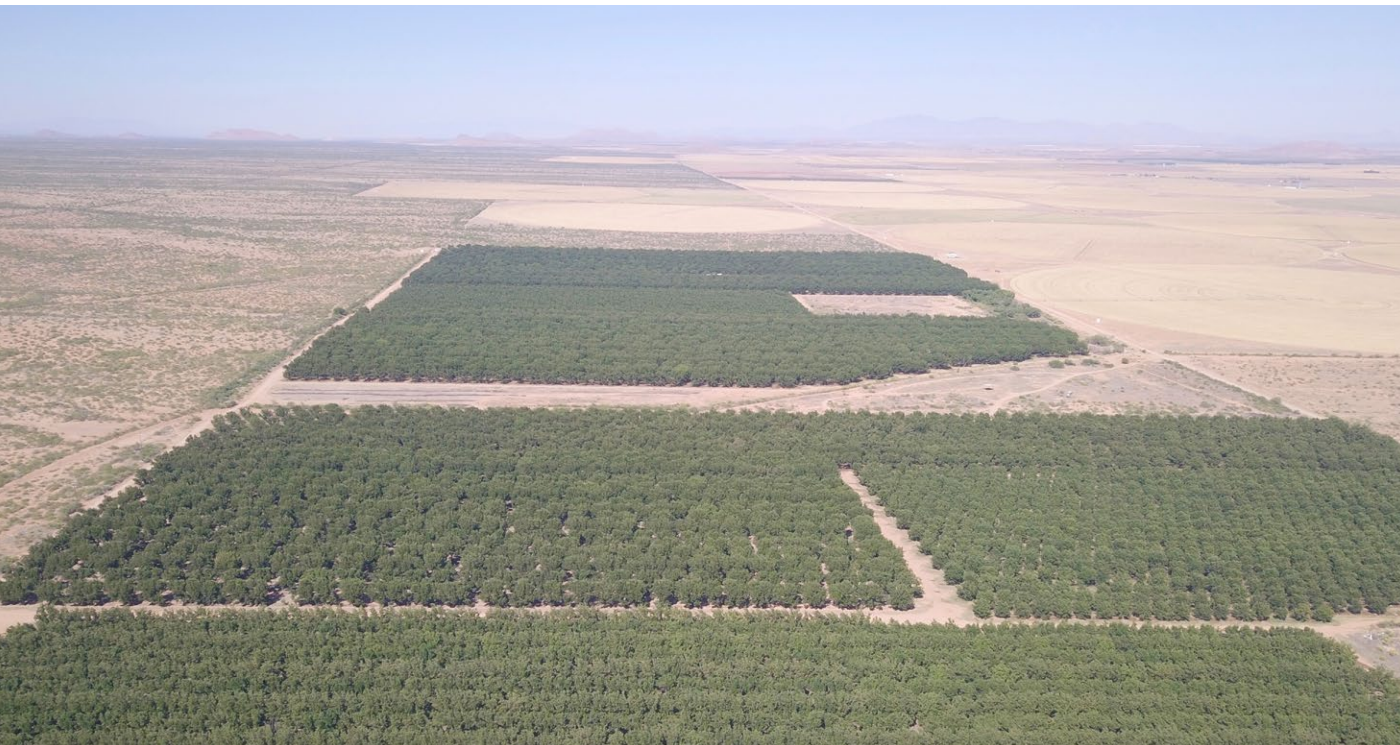


ARIZONA PECAN DATA				
YEAR	ACRES BEARING	UTILIZED PRODUCTION IN SHELL LBS	YIELD LBS/ACRE	AZ YIELD % TO U.S.
2016	15,000	24,800,000	1,653	242%
2017	16,000	28,000,000	1,750	232%
2018	17,000	27,900,000	1,641	279%
2019	19,000	36,100,000	1,900	294%
2020	21,000	29,200,000	1,390	187%
2021	22,000	40,900,000	1,859	298%
2022	23,000	39,100,000	1,700	250%
2023	25,000	42,300,000	1,692	240%
AVERAGES		32,285,714	1,699	252%

U.S. PECAN DATA			
YEAR	ACRES BEARING	UTILIZED PRODUCTION IN SHELL LBS	YIELD LBS/ACRE
2016	393,700	268,770,000	683
2017	404,800	304,850,000	753
2018	408,900	240,930,000	589
2019	395,000	255,600,000	647
2020	408,000	304,050,000	745
2021	411,000	256,450,000	624
2022	409,000	277,700,000	679
2023	436,000	306,750,000	704
AVERAGES		272,621,429	674

Source: quickstats.nass.usda.gov

COURTLAND RANCH PROPERTY PHOTOS



GLEESON RANCH PROPERTY PHOTOS



DETAIL MAP | COURTLAND FARM

Bobby Wuertz | 480.483.8100 | www.landadvisors.com

Property Highlights:

- 286 acres of Pecans
- 100% in production
- 100% Western

80 acres unplanted with water rights

Irrigation:

- 100% of ranch irrigated
- 5 wells | spin clean filters | 2,500 gpm
- 1 well with casing drilled to 1,000 ft. (2018) not in use

State Trust

W Courtland Rd

N Moore Rd

191

W Rucker Canyon Rd

N Martineau Rd

W 101st St
N Grizzle Rd

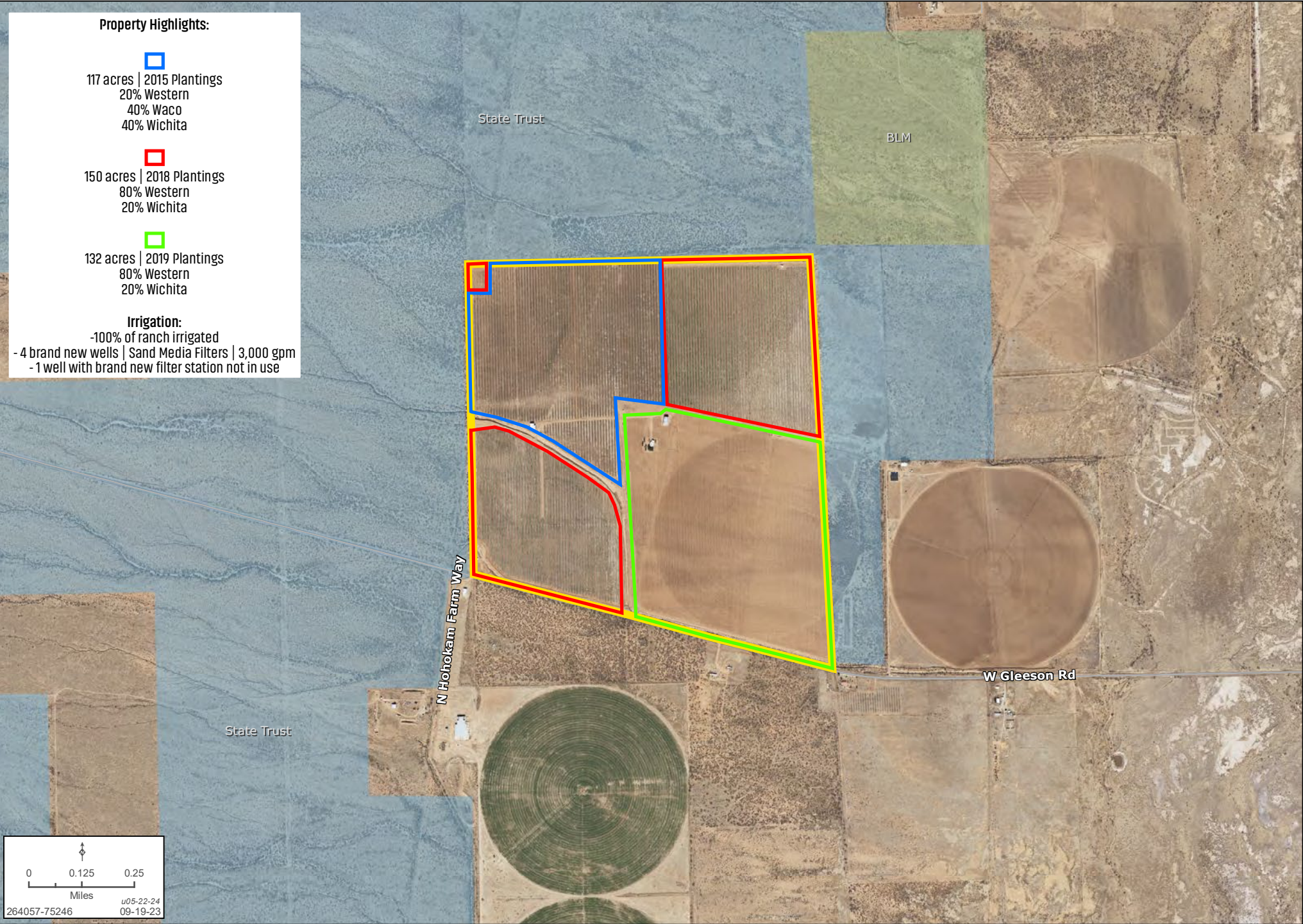


264057-75246

09-19-23

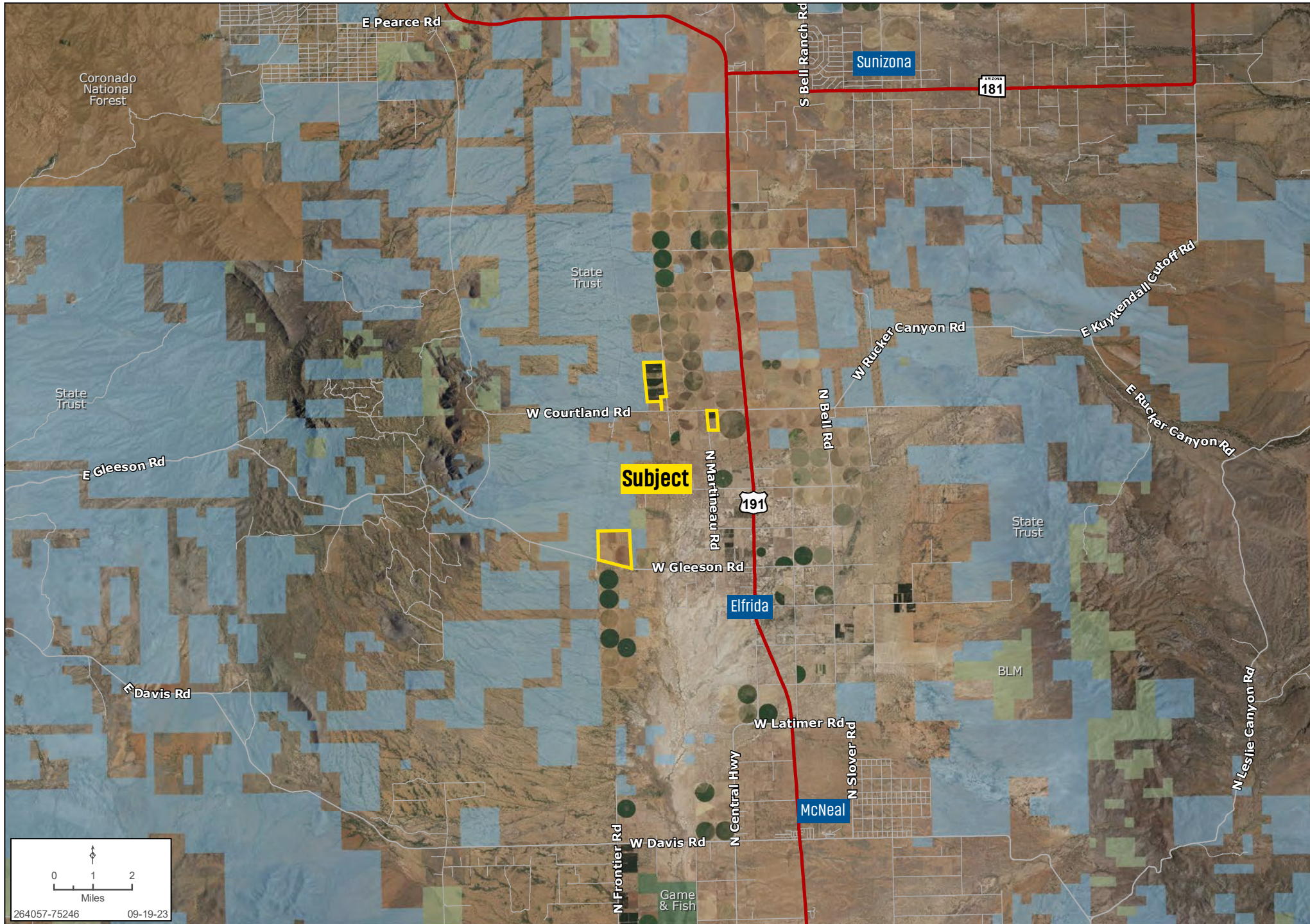
DETAIL MAP | GLEESON FARM

Bobby Wuertz | 480.483.8100 | www.landadvisors.com



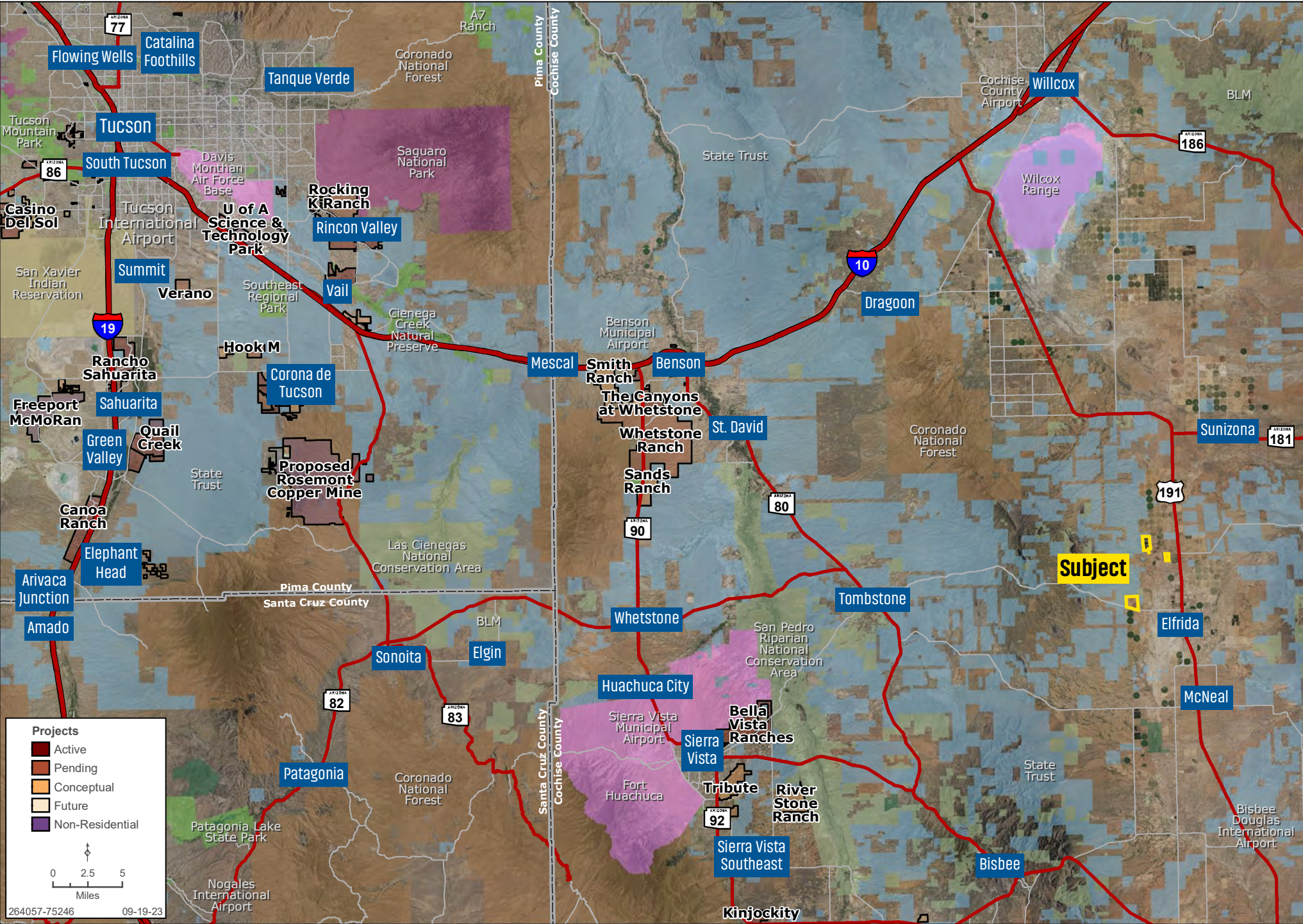
AREA MAP

Bobby Wuertz | 480.483.8100 | www.landadvisors.com



REGIONAL MAP

Bobby Wuertz | 480.483.8100 | www.landadvisors.com



The information in this document and any attachments regarding any property has been obtained from sources believed reliable, but we have not verified it and we make no guarantee, warranty, or representation as to its accuracy or completeness, and we do not undertake to update or correct any of the information presented. Any projections, opinions, assumptions, or estimates ("forward-looking statements") used are, for example, only and do not represent the current or future performance of the property and actual results may differ materially from such forward-looking statement due to, without limitation, changes in: (i) the market, (ii) governmental legal, regulatory or permitted use changes, and (iii) other factors. You and your advisors should conduct a careful, independent investigation of the property to determine to your satisfaction the property's suitability for your needs. Any reliance on this information is at your own risk and is subject to change, prior sale or complete withdrawal. AZCochise264057 - 02.21.2025.



LandAdvisors.com