

CASA GRANDE COMMONS SOUTH

NWC FLORENCE BOULEVARD & HACIENDA ROAD | CASA GRANDE, ARIZONA



CONTACT FOR MORE INFORMATION

Kirk P. McCarville, CCIM
kmccarville@landadvisors.com
520.251.0348

Trey Davis
tdavis@landadvisors.com
602.363.3901

 Land Advisors[®]
ORGANIZATION

520.251.0348 | LandAdvisors.com

EXECUTIVE SUMMARY



LOCATION	The Property is located at the northwest corner of Florence Boulevard & Hacienda Road in Casa Grande, Arizona.
SIZE	±52.26 Acres
PRICE	Submit
PARCEL	505-24-003F
ZONING	PAD, City of Casa Grand Proposed Transitional Commercial per the Casa Grande Commons PAD. Click here for more information.
TAXES	\$2,444.92 (2024)
UTILITIES	Water - Arizona Water Company Sewer - City of Casa Grande Electric - ED2 Gas - Southwest Gas Corporation

TRAFFIC COUNTS

Florence Blvd: ±9,561 E/W VPD
Hacienda Road: ±2,626 N/S VPD
I-10: ±62,267 N/S VPD

Source: ADOT, 2024

DEMOGRAPHICS

	1 Mile	3 Miles	5 Miles
2023 Est. Population	±1,543	±13,406	±45,195
2023 Avg. HH Income	\$98,890	\$91,787	\$86,741

Source: ESRI, 2024

DUE DILIGENCE

[Click here to view the Due Diligence Documents](#)

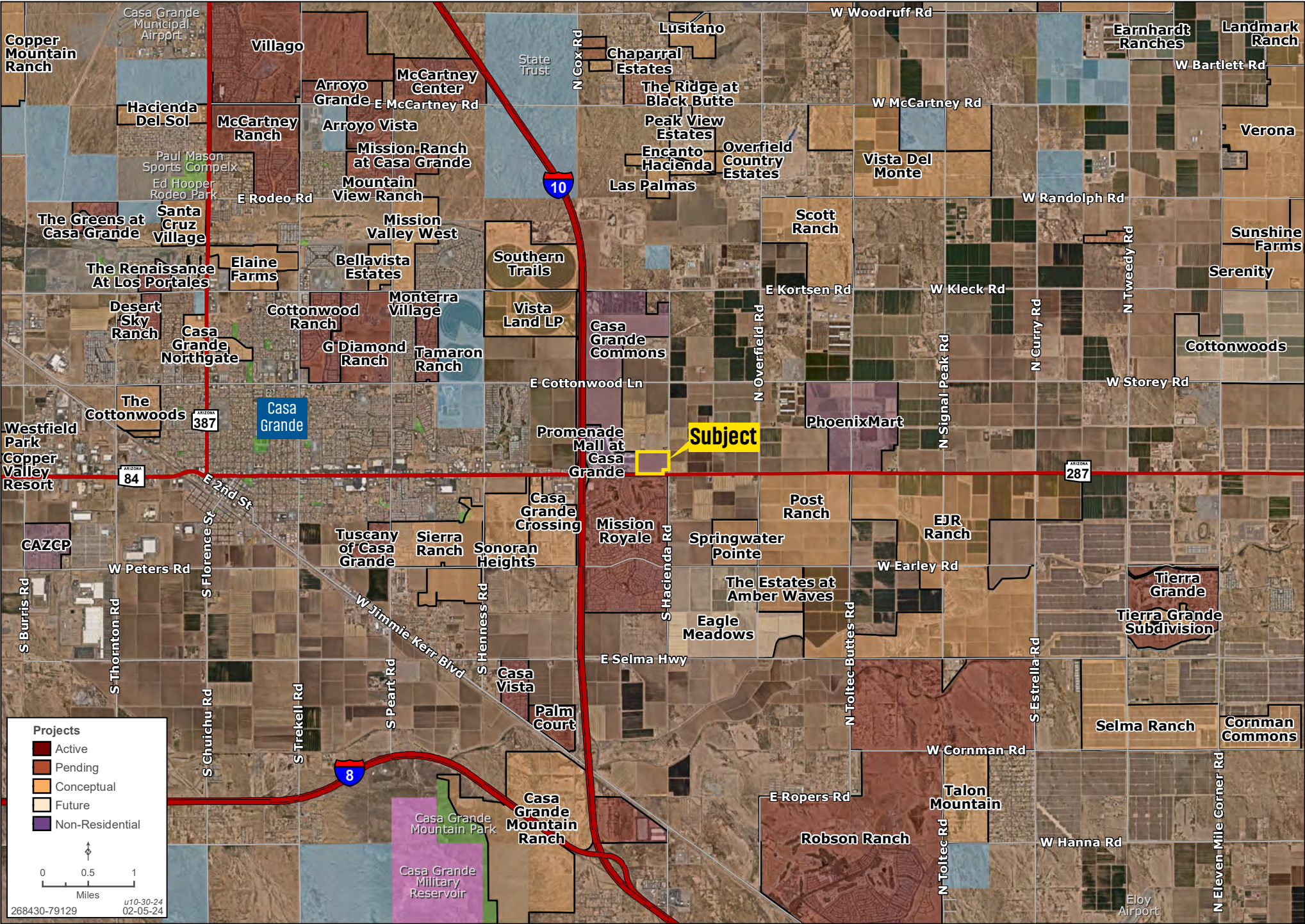


Kirk P. McCarville, CCIM | Trey Davis | 520.251.0348 | landadvisors.com

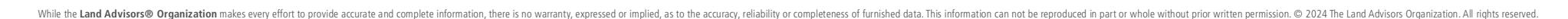


DEVELOPMENT

Kirk P. McCarville, CCIM | Trey Davis | 520.251.0348 | landadvisors.com

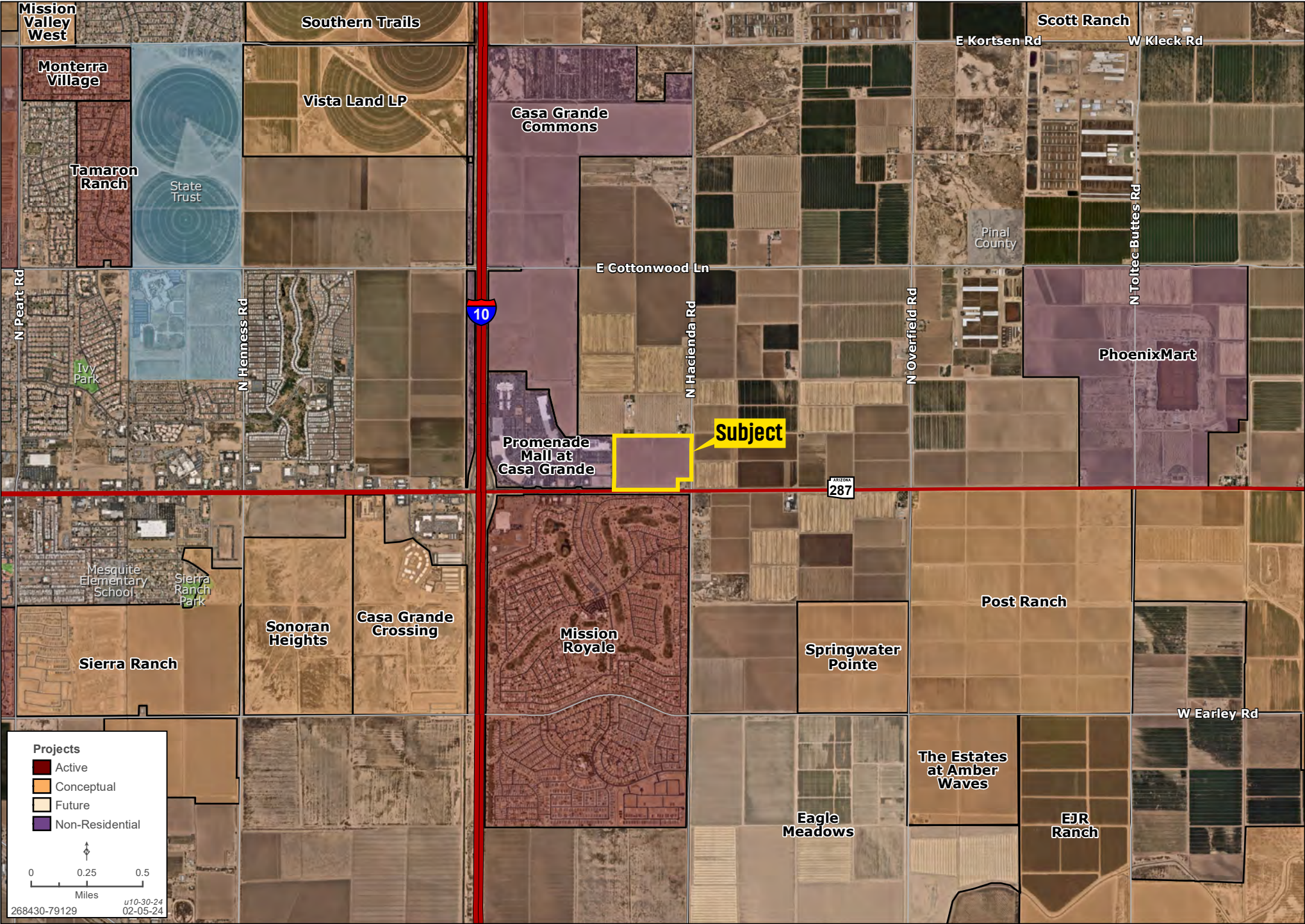


Kirk P. McCarville, CCIM | Trey Davis | 520.251.0348 | landadvisors.com



AREA

Kirk P. McCarville, CCIM | Trey Davis | 520.251.0348 | landadvisors.com



DETAIL

Kirk P. McCarville, CCIM | Trey Davis | 520.251.0348 | landadvisors.com



PINAL COUNTY HIGHLIGHTS |

CLICK THE LINKS BELOW FOR MORE INFORMATION



New Jobs

Coming to
Pinal County



Labor

Report



Casa Grande

Incentive
Package



Pinal County

Incentive
Package



4Q24

Market
Insights



About

Land Advisors
Organization

The information in this email and any attachments regarding any property has been obtained from sources believed reliable, but we have not verified it and we make no guarantee, warranty, or representation as to its accuracy or completeness, and we do not undertake to update or correct any of the information presented. Any projections, opinions, assumptions, or estimates ("forward-looking statements") used are, for example, only and do not represent the current or future performance of the property and actual results may differ materially from such forward-looking statement due to, without limitation, changes in: (i) the market, (ii) governmental legal, regulatory or permitted use changes, and (iii) other factors. You and your advisors should conduct a careful, independent investigation of the property to determine to your satisfaction the property's suitability for your needs. Any reliance on this information is at your own risk and is subject to change, prior sale or complete withdrawal. AZPinal268430 - 03.20.2025.



LandAdvisors.com