

8094 MARYLAND AVE

NAMPA, ID 83686



CONTACT FOR MORE INFORMATION


Tyler Johnson
tjohnson@landadvisors.com
208.866.3579


 Land Advisors[®]
ORGANIZATION

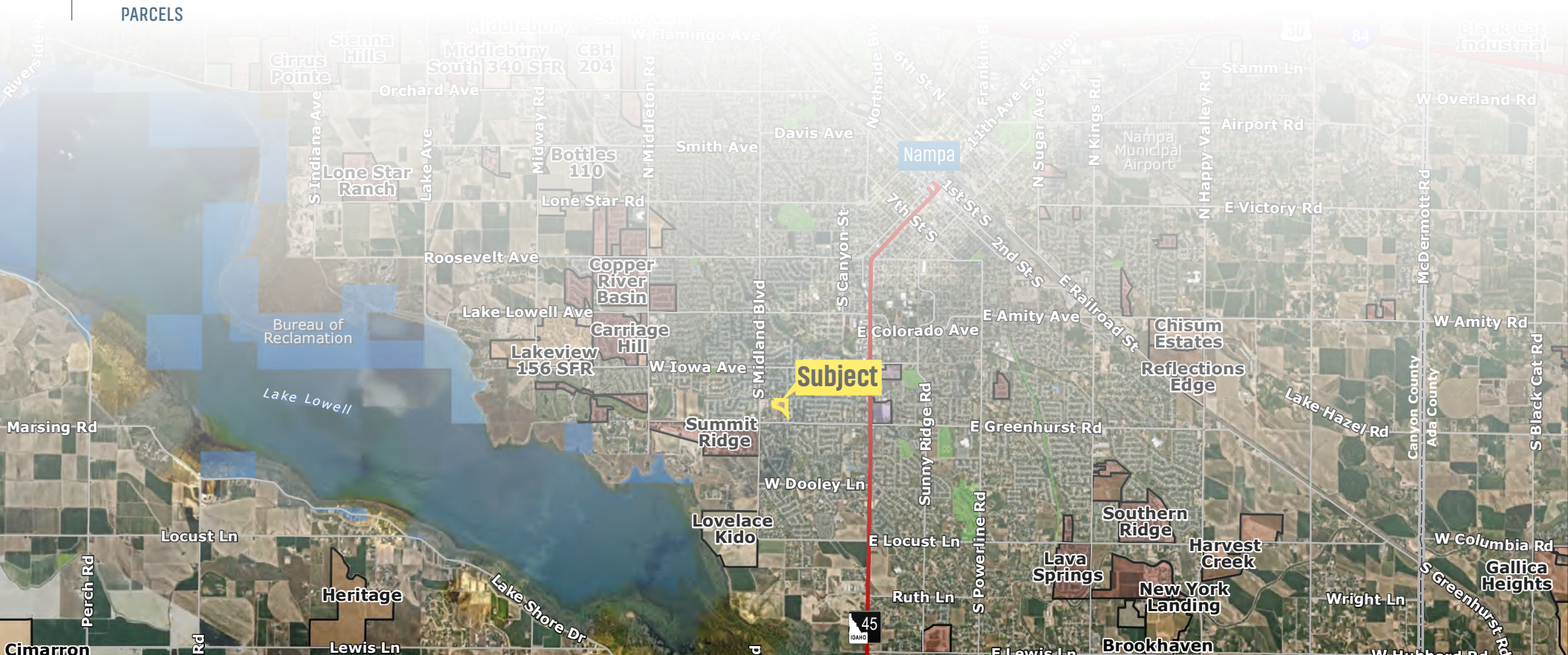
208.366.8700 | LandAdvisors.com

EXECUTIVE SUMMARY



 LOCATION	SWC W Maryland Ave and S Horton St
 ADDRESS	8094 W Maryland Ave, Nampa, ID 83686
 SIZE	±5.9 Acres
 PARCELS	R2297101000, R2297101100

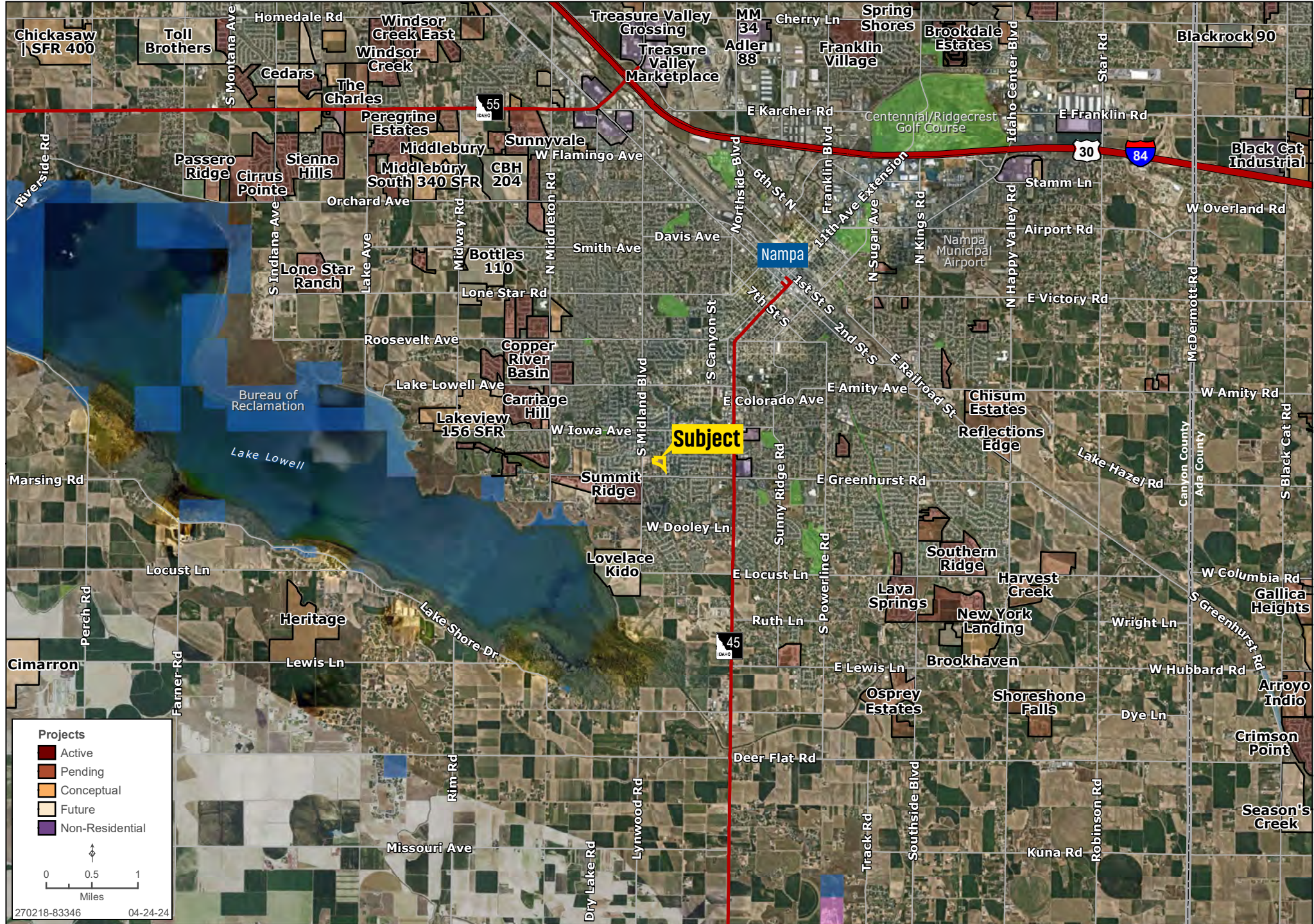
 LIST PRICE	\$1,200,000
 COMMENTS	<ul style="list-style-type: none">• Great infill Development Property• Utilities are at or near the property• Property is designated as Medium Density Residential on the Future Land Use Map for the City of Nampa which “requires a gross density of 2.51 to 8 dwelling units per acre (gross).”





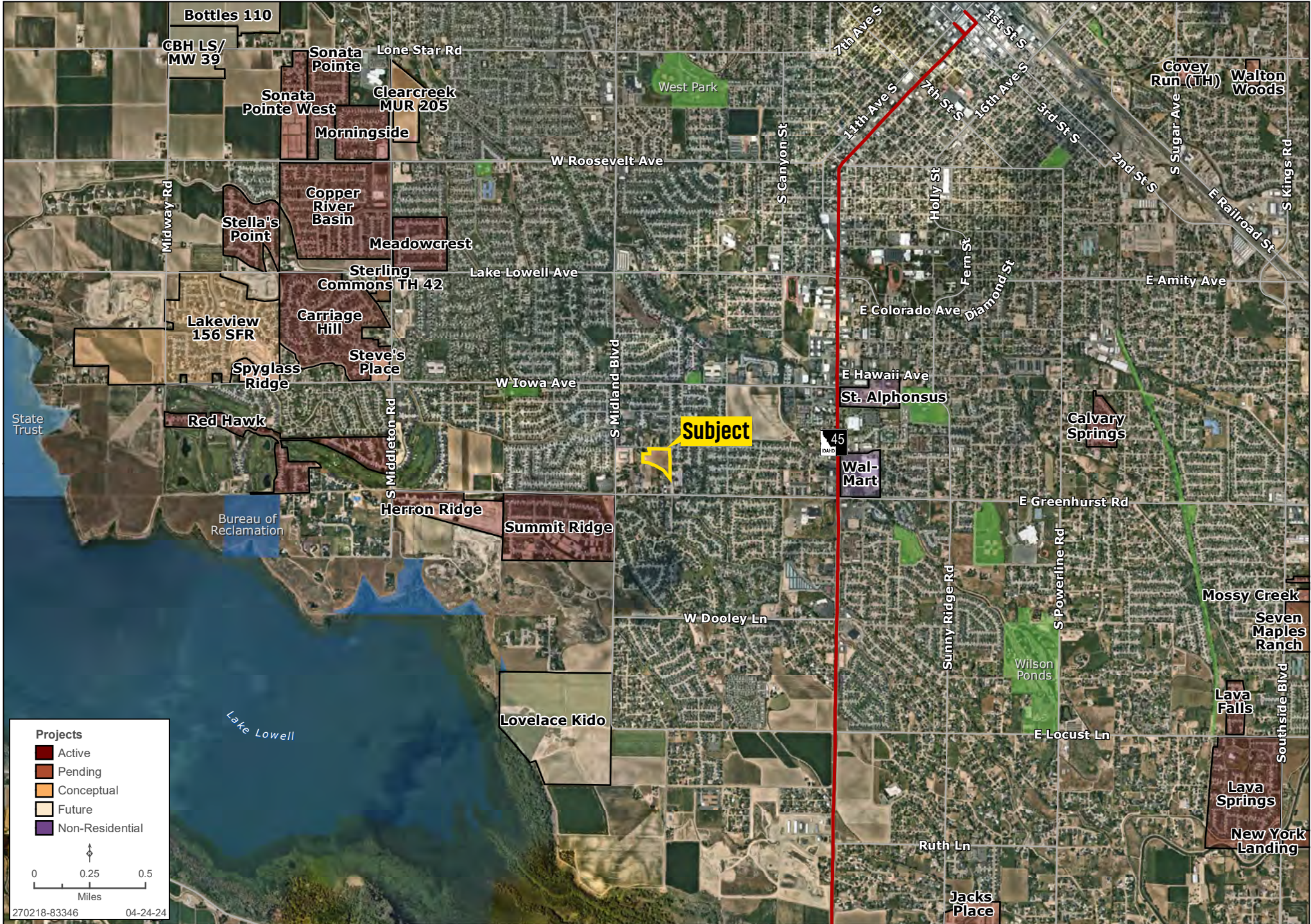
DEVELOPMENT | 8094 W MARYLAND AVE

Tyler Johnson | 208.866.3579 | landadvisors.com



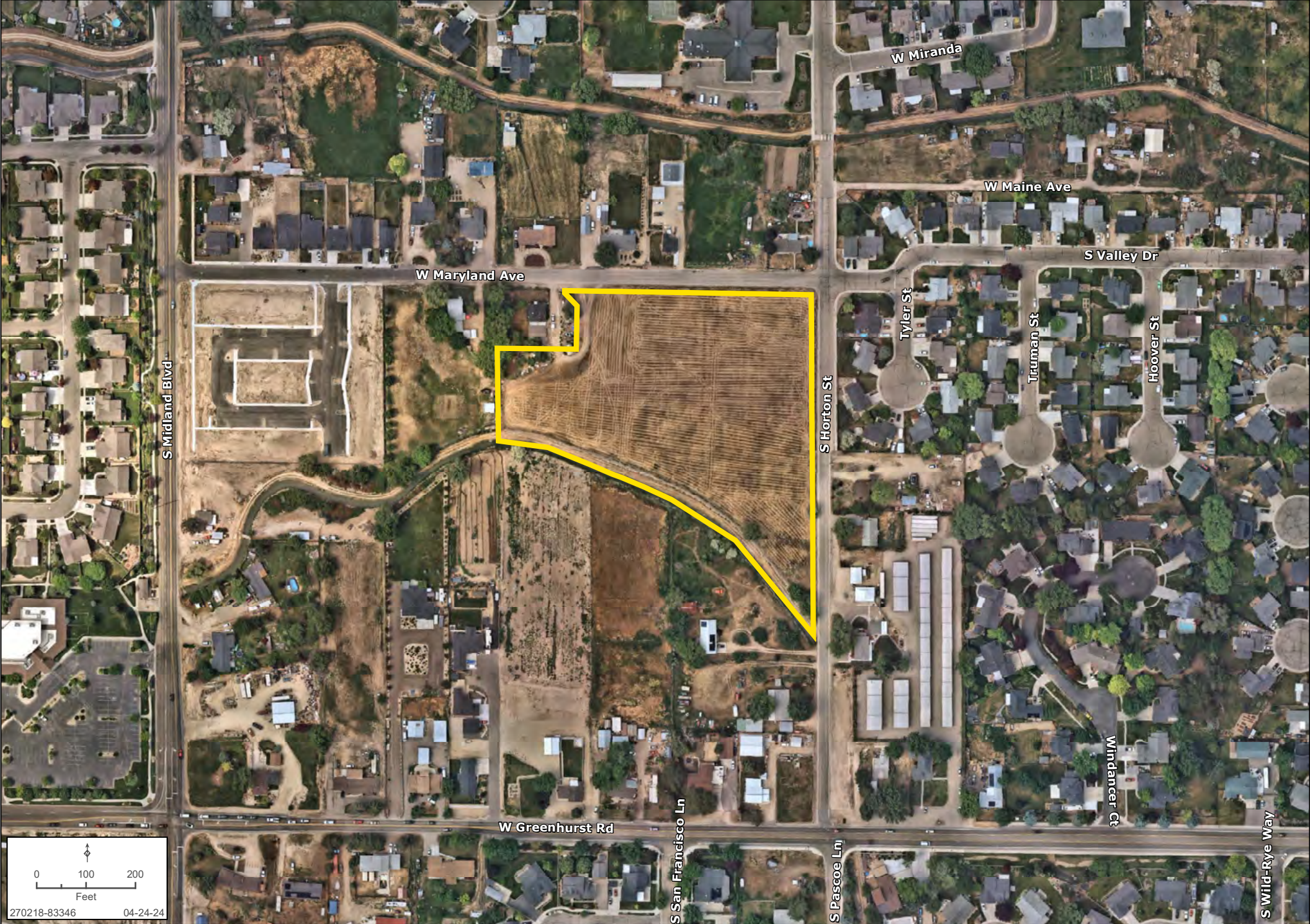
AREA | 8094 W MARYLAND AVE

Tyler Johnson | 208.866.3579 | landadvisors.com



DETAIL | 8094 W MARYLAND AVE

Tyler Johnson | 208.866.3579 | landadvisors.com



270218-83346 04-24-24

DRONE PHOTO



DRONE PHOTO



DRONE PHOTO



DRONE PHOTO



Tyler Johnson
tjohnson@landadvisors.com
208.866.3579



3597 E Monarch Sky Lane, Ste 360, Meridian, ID 83646 | 208.366.8700 | LandAdvisors.com

The information in this email and any attachments regarding any property has been obtained from sources believed reliable, but we have not verified it and we make no guarantee, warranty, or representation as to its accuracy or completeness, and we do not undertake to update or correct any of the information presented. Any projections, opinions, assumptions, or estimates ("forward-looking statements") used are, for example, only and do not represent the current or future performance of the property and actual results may differ materially from such forward-looking statement due to, without limitation, changes in: (i) the market, (ii) governmental legal, regulatory or permitted use changes, and (iii) other factors. You and your advisors should conduct a careful, independent investigation of the property to determine to your satisfaction the property's suitability for your needs. Any reliance on this information is at your own risk and is subject to change, prior sale or complete withdrawal. IDCanyon270218 - 02.04.2026.