

# THE HEIGHTS AT LAUGHLIN RANCH

COCHRAN DRIVE, BULLHEAD CITY, AZ 86429



## CONTACT FOR MORE INFORMATION

**Capri Barney**

cbarney@landadvisors.com  
928.445.4457

**Rick Hildreth**

rhildreth@landadvisors.com  
702.872.8668

**Hunter Kotoske**

hkotoske@landadvisors.com  
480.874.4341



480.483.8100 | [LandAdvisors.com](https://LandAdvisors.com)

# PROPERTY OVERVIEW



## LOCATION

Cochran Drive, Bullhead City, AZ 86429



## PRICE

Call for Pricing



## LOTS

±161-185 Lots



## SIZE

±76.65 Acres



## PARCELS

213-81-006, 213-75-021, 213-81-007



## UTILITIES

Electricity: Mohave Electric Cooperative, INC

Telephone: Frontier Communications

Natural Gas: Southwest Gas

Water: City of Bullhead

Sewer: City of Bullhead

*Buyer to verify distance from and ability to connect to all utilities.*



## TAXES

\$2,869.66 (2025)



## ENTITLEMENTS

- Approved preliminary plat for 185 lots





# PROPERTY DESCRIPTION



**THE HEIGHTS AT LAUGHLIN RANCH** is located within the Laughlin Ranch master planned golf community in Bullhead City, Arizona. This is the most desirable and last developable tract of land with preliminary entitlement approvals within the gated portion of Laughlin Ranch. This unprecedented development opportunity capitalizes on its proximity to large nearby markets and abundance of recreational activities. The current zoning allows for approximately 161 residential lots. An approved preliminary plat includes 185 lots, with 51 lots already graded. The average lot size exceeds 18,000 square feet, supporting larger custom or semi-custom homes.

The Laughlin Ranch Golf Club is the #2 ranked public golf course in Arizona and the highest-rated golf course in the Laughlin, Nevada and Bullhead City, Arizona region. The championship golf course, designed by David Druzisky, offers stunning Black Mountain Views, Colorado River views, and world-class amenities like a clubhouse, spa, restaurant, and event spaces. It has earned accolades from various publications for its exceptional public golf experience.

Bullhead City is a community known for its unique and serene landscape that is unlike any other city in the state and has generally shown a supportive posture towards development. The Colorado River flows directly through Bullhead City and serves as a major economic driver for the region. The proximity to the Colorado River and Lake Mohave enhances the area's lifestyle appeal with a variety of water-based recreational activities, including boating, kayaking, jet skiing, and fishing.

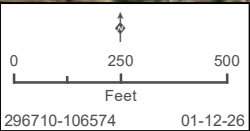
The property is situated directly across the river from Laughlin, Nevada, offering convenient access to world-class entertainment, dining, and gaming at Nevada's casinos. Las Vegas is also within a reasonable driving distance from The Heights at Laughlin Ranch. The property is uniquely positioned near the convergence of three states- Arizona, Nevada, and California-providing a rare marketing advantage by appealing to three distinct buyer pools. This strategic location, combined with breathtaking views of the Laughlin Ranch Golf Club, the Black Mountains, Laughlin Casino Row, and the Colorado River, makes the property exceptionally compelling. From its elevated vantage point, The Heights at Laughlin Ranch captures the region's picturesque landscape and offers the perfect blend of luxurious, resort-style living and affordable residential opportunities, resulting in a development with truly endless potential.





# DETAIL | THE HEIGHTS AT LAUGHLIN RANCH

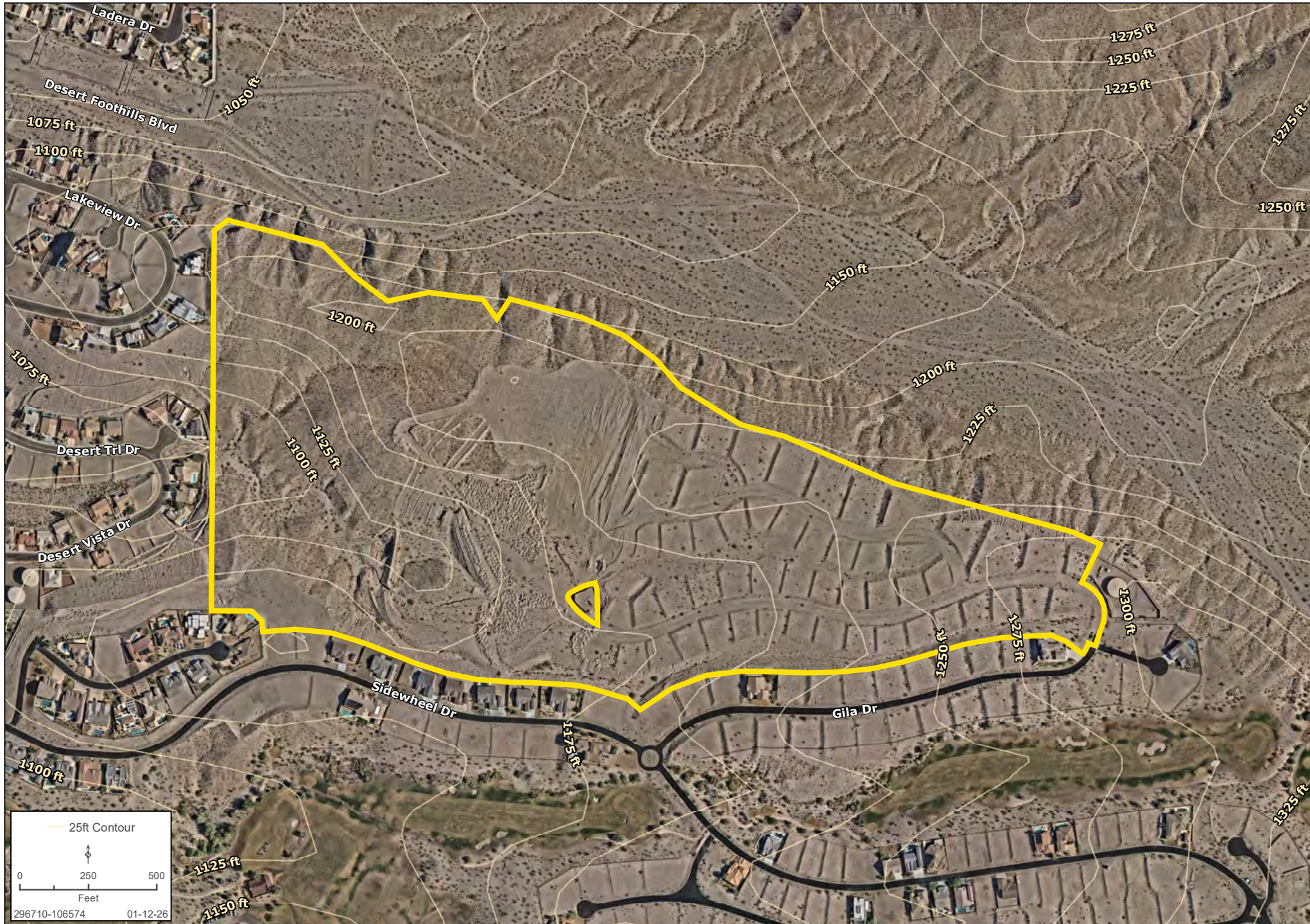
Capri Barney | Rick Hildreth | Hunter Kotoske | 928.445.4457 | landadvisors.com





# CONTOUR | THE HEIGHTS AT LAUGHLIN RANCH

Capri Barney | Rick Hildreth | Hunter Kotoske | 928.445.4457 | landadvisors.com





# REGIONAL AMENITIES | THE HEIGHTS AT LAUGHLIN RANCH

Capri Barney | Rick Hildreth | Hunter Kotoske | 928.445.4457 | landadvisors.com









The information in this document and any attachments regarding any property has been obtained from sources believed reliable, but we have not verified it and we make no guarantee, warranty, or representation as to its accuracy or completeness, and we do not undertake to update or correct any of the information presented. Any projections, opinions, assumptions, or estimates ("forward-looking statements") used are, for example, only and do not represent the current or future performance of the property and actual results may differ materially from such forward-looking statement due to, without limitation, changes in: (i) the market, (ii) governmental legal, regulatory or permitted use changes, and (iii) other factors. You and your advisors should conduct a careful, independent investigation of the property to determine to your satisfaction the property's suitability for your needs. Any reliance on this information is at your own risk and is subject to change, prior sale or complete withdrawal. AZMohave296710 - January 13, 2026 2:18 PM.



[LandAdvisors.com](https://LandAdvisors.com)